



EBI Packaging



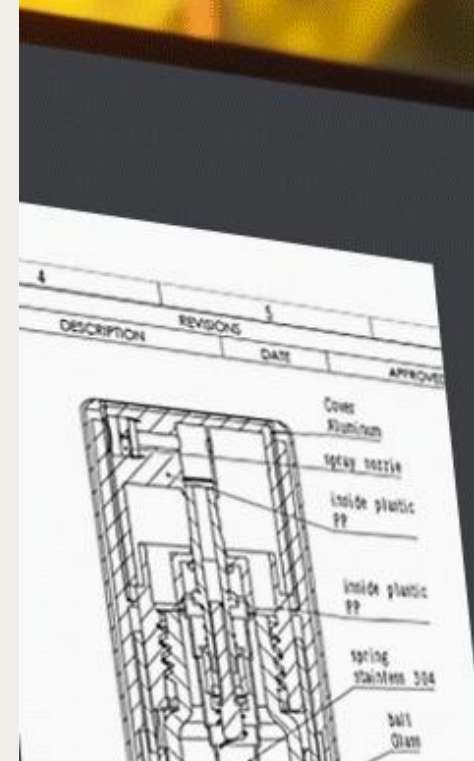
Perfume Atomizer

Logo Customization



EBI PACKAGING

Logo Customization



1	Screen printing
2	Laser engraving
3	Secondary oxidation

4	Embossing
5	Hot stamping
6	Gravure printing





EBI PACKAGING

Advantages:

- Cost-Effective for Bulk Production
- Durability & Vibrant Colors
- Texture and Finish Options
- Customization

Disadvantages

- Setup Costs
- Limited Color Range
- Time-Consuming
- Environmental Considerations
- Less Flexibility for Changes



Screen printing

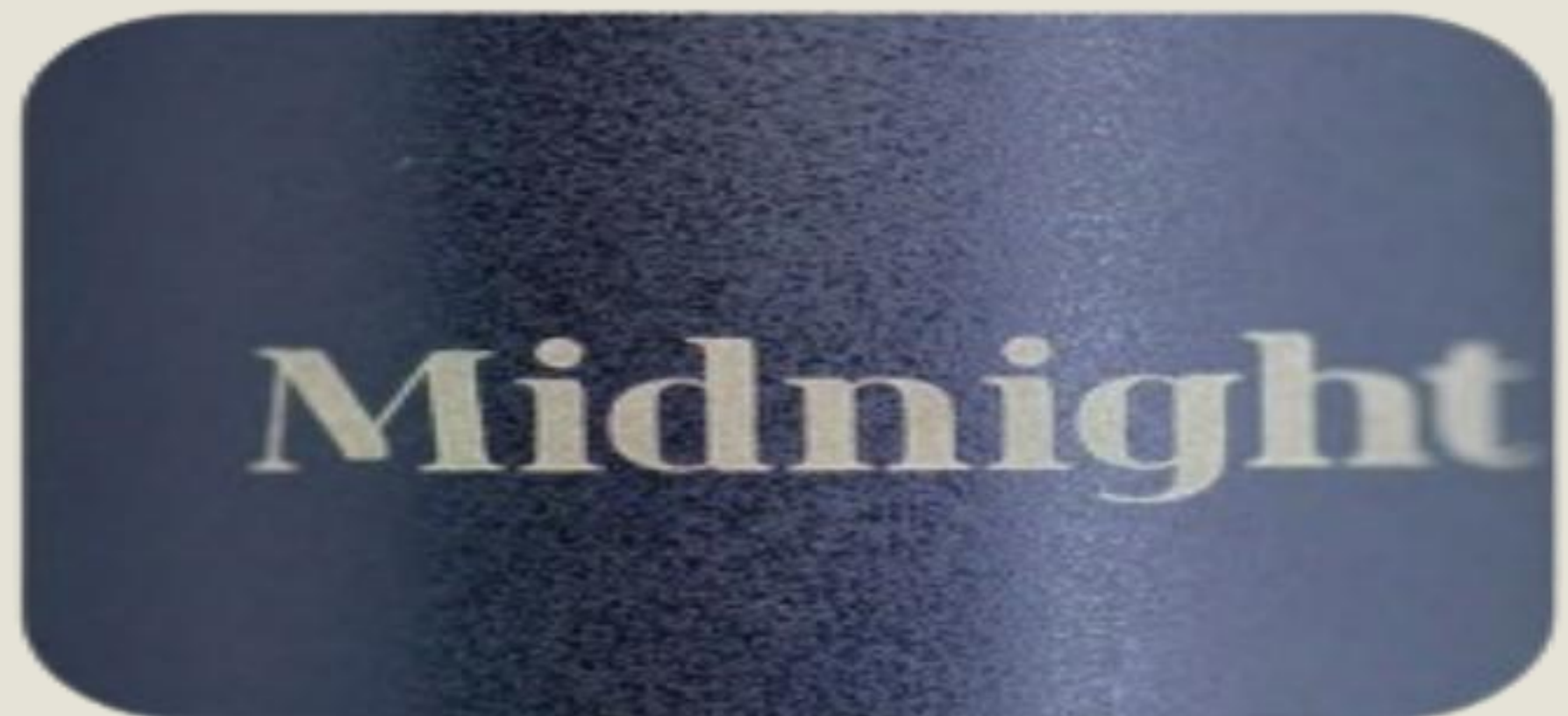
Screen printing is an ancient but widely used printing method. Overall, screen painting can be a great choice for branding perfume atomizers, especially for larger runs and designs that benefit from durability and vibrancy, but it may not be ideal for all situations, particularly small batches or highly detailed multi-color designs.



EBI PACKAGING

Laser engraving

Laser engraving, also called laser engraving or laser marking, is a process of surface treatment using optical principles. Overall, while laser engraving offers significant benefits in terms of customization and durability, it also presents challenges that need to be considered, especially regarding material compatibility and costs.





EBI PACKAGING

Advantages:

- Precision and Detail
- Durability & Customization
- Speed and Efficiency
- Eco-Friendly

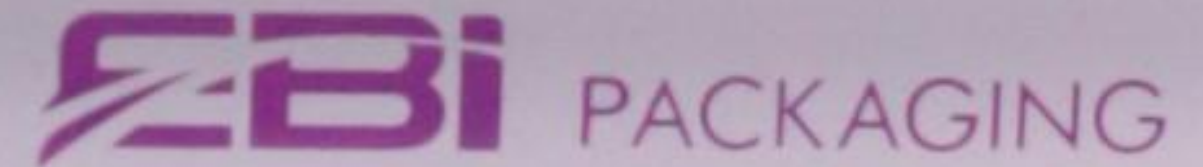
Disadvantages

- High Cost
- Material Limitations
- Heat Sensitivity
- Surface Preparation
- Limited Color Options





EBI PACKAGING



Secondary oxidation

The customized secondary oxidation process for logos on perfume atomizers is a specialized surface treatment method that applies a second layer of anodizing or oxidation to create a durable, precise, and elegant logo on metal atomizers. This process provides a high-quality finish, making it a popular choice for premium perfume brands.

Advantages:

- Enhanced Durability and Scratch
- Luxurious Aesthetic Appeal
- Corrosion Resistance
- Eco-Friendly Process
- Precision and Customization
- Wide Range of Colors:

Disadvantages

- Higher Production Costs
- Time-Intensive Process
- Limited Material Compatibility
- Color Range Limitations
- Risk of Highlighting Surface Imperfections
- Inconsistency with Very Fine Details



EBI PACKAGING



Advantages:

- Enhanced Tactile Appeal
- Elegant and Premium Look
- Durability & Brand Differentiation
- No Additional Chemicals or Inks

Disadvantages

- Higher Production Costs
- Limited Design Complexity
- Surface Constraints
- Increased Production Time
- Limited Color Options
- Tooling Wear and Maintenance

Embossing

The **embossing** process is a popular choice for adding a three-dimensional effect to product logos on perfume atomizers. By **raising** or **depressing** parts of the logo design on the surface, **embossing** creates a **tactile, visually distinct logo** that can add a sense of luxury. Here are some **key advantages and disadvantages** of **using embossing** for perfume atomizer logos.



EBI PACKAGING

Hot stamping



Gold stamping

Silver stamping

Other color

The customized hot stamping process is a decorative technique that uses heat and pressure to transfer metallic foil or colored film onto the surface of perfume atomizers. This method is commonly used for high-end branding because it creates a luxurious, shiny logo with a premium appearance.

Advantages:

- Premium, High-End Appearance
- Durable and Scratch-Resistant
- Sharp, High-Definition
- Consistency Across Production Runs
- No Drying or Curing Needed

Disadvantages

- Higher Initial Setup Costs
- Limited Material Compatibility
- Potential for Heat Damage
- Risk of Wear on Highly Textured Surfaces
- Environmental Impact of Foils
- Color Limitations in Metallic Foils



EBI PACKAGING

Gravure printing

Gravure printing is an intaglio printing process where the logo design is engraved onto a metal plate or cylinder, allowing ink to be transferred to the surface of perfume atomizers with high precision. This technique is popular for creating intricate, detailed logos on a range of materials, offering excellent image quality and durability.



Advantages:

- High-Quality, Detailed Image Reproduction
- Durable and Long-Lasting Print
- Versatile Color Options
- Consistency Across Large Production Runs
- Enhanced Ink Adhesion
- Ability to Print on Curved Surfaces

Disadvantages

- High Initial Setup Costs
- Complex Production Process
- Limited Material Compatibility
- Environmental Impact of Ink
- Difficulties with Small Batch Printing
- Potential for Ink Smudging During Printing



EBI PACKAGING

FOR QUESTIONS

Reach out to: marketing@ebi-china.com



EBI PACKAGING



THANK YOU